

# BECLAWAT



## 71040 - Fixed Aluminum Clamp-on Window

This window has a clamp-on or bolt-on style frame. It will suit a glass thickness of 5 and 6mm. [3/16" or 1/4" glass].

ABS type approved.

Available in custom shapes and sizes.

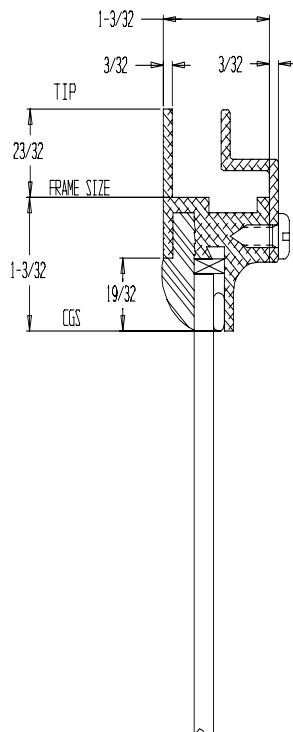
Pictured window has a clear anodized finish frame with radius corners.

Other finishes are available. Tempered clear, tints and laminated glass are available.



For more information  
Call: 613-966-5611

Email:  
info@beclawat.com



CROSS SECTION  
CLAMP-ON APPLICATION



**BECLAWAT** Manufacturing Inc.  
90 Hanna Crt. Belleville, ON K8P 5H2 Canada  
Ph: 613-966-5611 Fx: 613-966-0878 www.beclawat.com

